

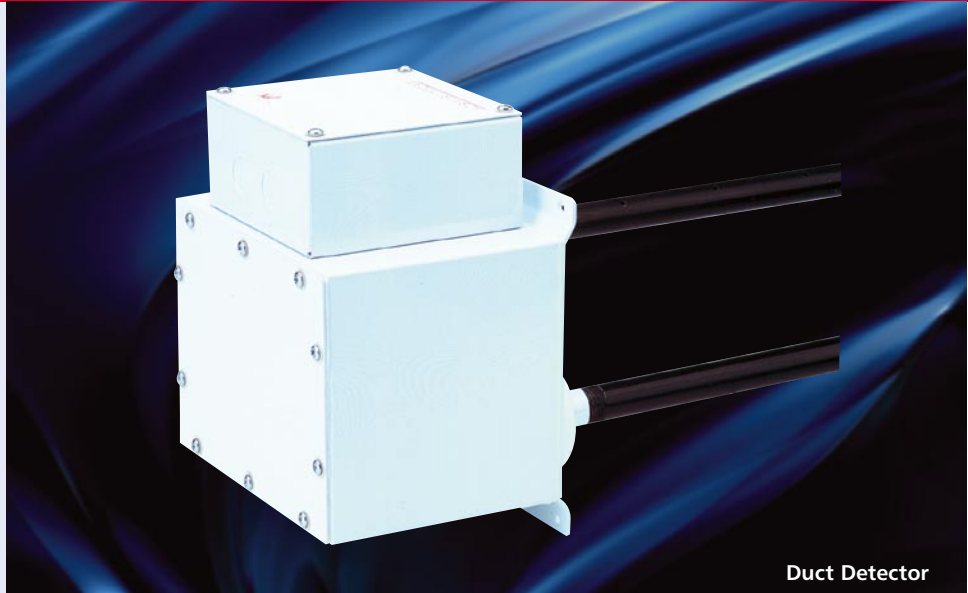
GENT
by Honeywell

6: VIGILON LOOP DEVICES

Duct Smoke Sensors

An optical smoke sensor specifically designed for use in ventilation ducting. Two 20mm probes sample the air in the duct for smoke. Detector housing is mounted externally to the duct. This device can trigger the shut-down of an air-conditioning or ventilation plant to prevent the spread of smoke.

A slave LED is included with the device.



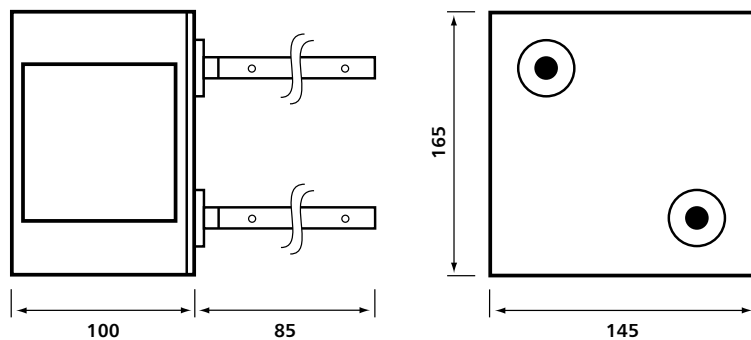
Duct Detector

TECHNICAL SPECIFICATION

Type	Duct smoke detector
Max Quantity per Loop	200 (50 if slave LEDs used)
Approx Weight	4.6 Kg
Operating Temperature	0°C to 50°C
Ingress Protection	IP55
Relevant Standard	N/A
Duct Air Velocity	1 to 10 m/sc
Device Load Factor	2 (1 for slave LEDs)

6

Dimensions (mm)



ORDER CODES

Duct Detector c/w slave LED 34760